



1 Building 12 - North Elevation  
1 : 200



2 Building 12 - East Elevation  
1 : 200



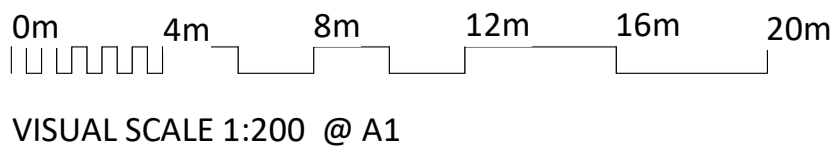
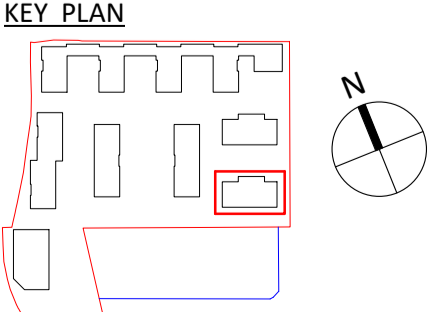
3 Building 12 - South Elevation  
1 : 200



4 Building 12 - West Elevation  
1 : 200

**NOTES**  
CONSULTANTS  
- Refer to highways consultant's drawings for details  
- Refer to landscape consultant's drawings for details  
- Landscaping layout is indicative only  
  
AREAS  
- Refer to area schedule  
  
© Copyright Reserved. ColladoCollins Architects Ltd

Rev	Notes	Date	By	Auth
P1	DRAFT Planning Issue	19-08-30	CS	FvB
P2	Issue for Planning	19-09-05	CS	FvB
P3	Planning amendment	19-09-24	CS	FvB
P4	Update for GLA Application	20-04-07	OT	JBC



- MATERIALS KEY**
- 01 Red Brick
  - 02 Buff Brick
  - 03 Coloured Brick
  - 04 Dark Buff Brick
  - 05 Red Brick with projecting feature course
  - 06 Powder coated Aluminium Frame Window
  - 07 Metal Balustrade
  - 08 Glass Balustrade
  - 09 Glazing System
  - 10 Reconstituted Stone

- 11 Opaque Glazing
- 12 Standing Seam Metal Cladding
- 13 Steel Frame
- 14 Metal Louvre Door
- 15 Metal Screen
- 16 Insulated Metal Panel
- 17 Coloured Cladding Panel
- 18 AOV Window
- 19 Transparent Glazing
- 20 Acoustic Louvre

**ColladoCollinsArchitects**

17-19 Foley Street  
London W1W 6DW  
T 020 7580 3490  
F 020 7580 2917  
info@colladocollins.com  
www.colladocollins.com

Date: 09/02/19  
Drawn By: CS  
Checked by: JBC  
Scale @ A1: As indicated  
Scale @ A3: 1 : 400  
CAD File No:

Inland Homes  
Hillingdon  
Building 12 - Elevations

PLANNING  
19011

P3(12)-100

P4  
Revision